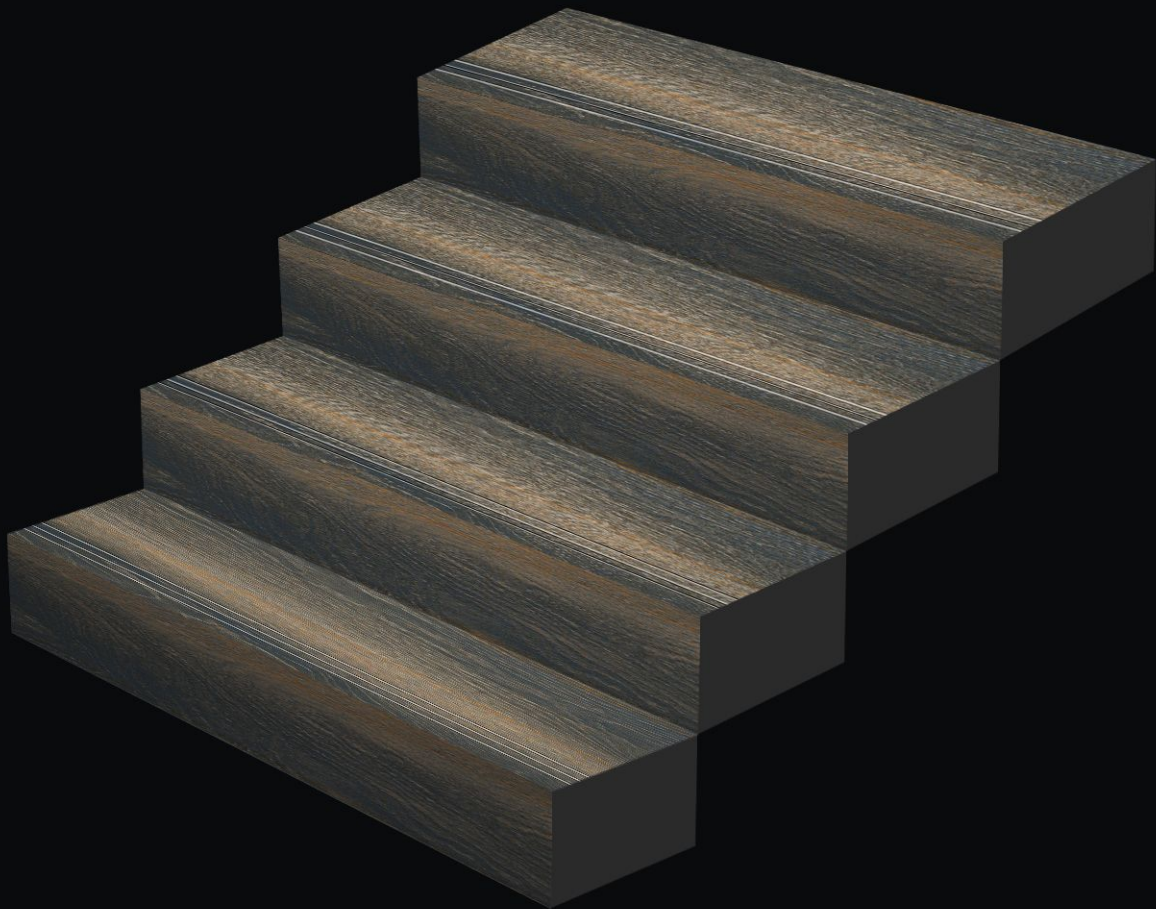
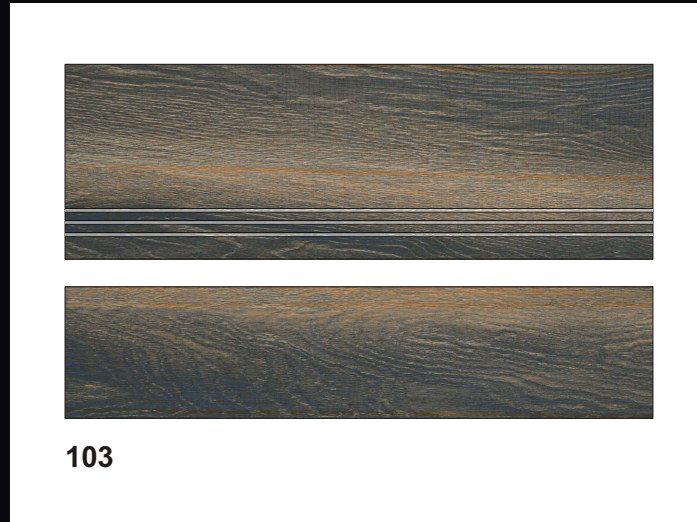


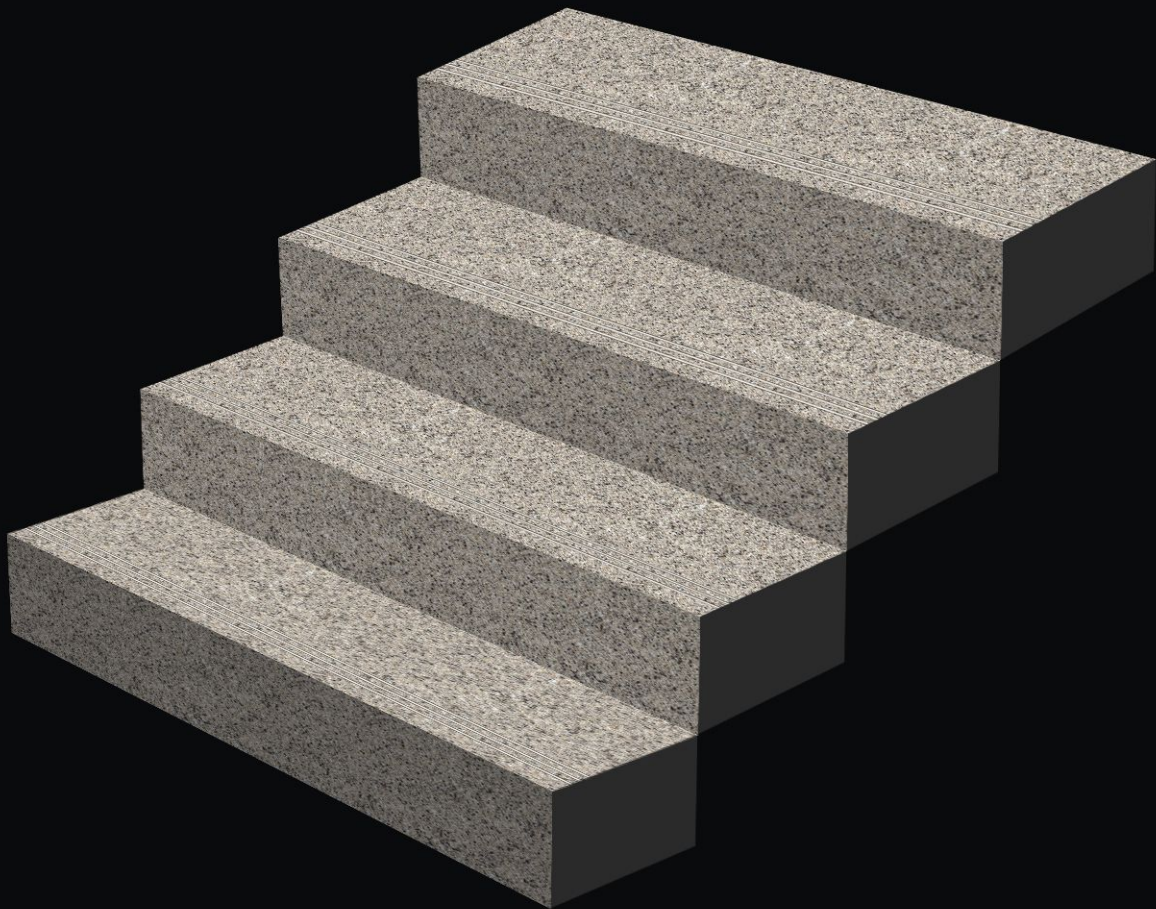
Step Up & Rise With Us...



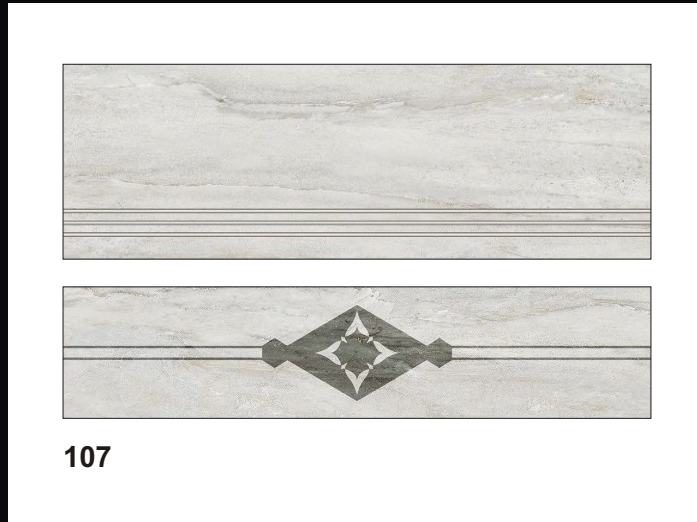


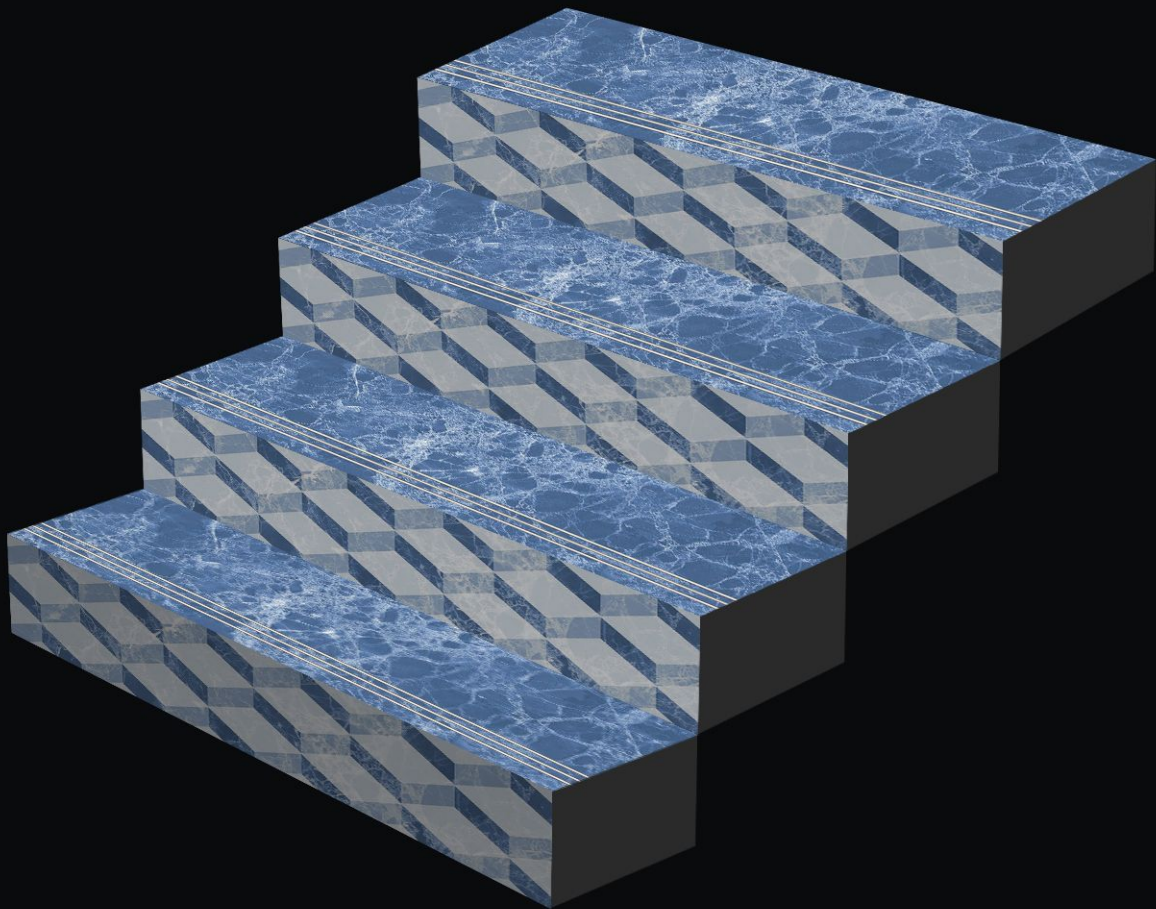
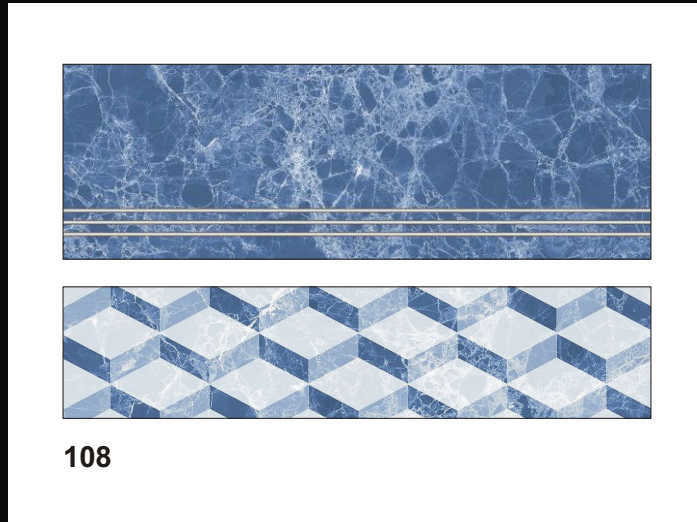


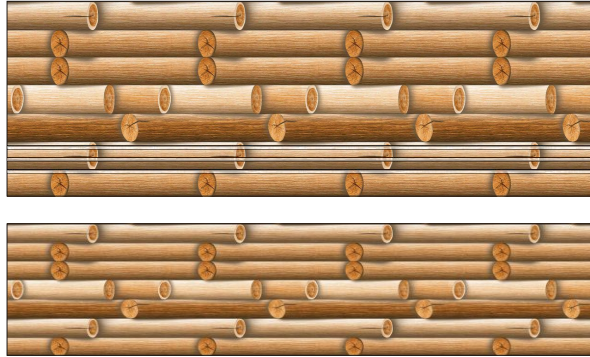




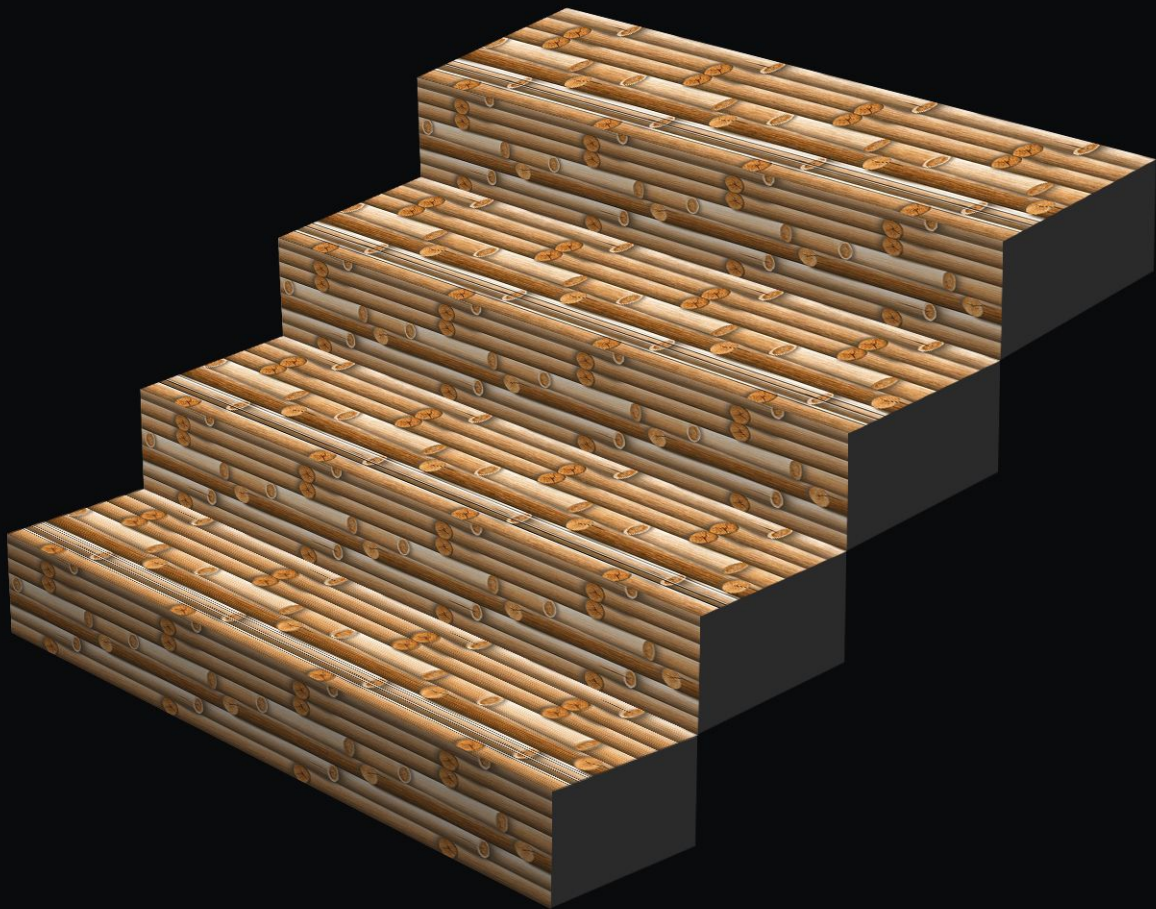


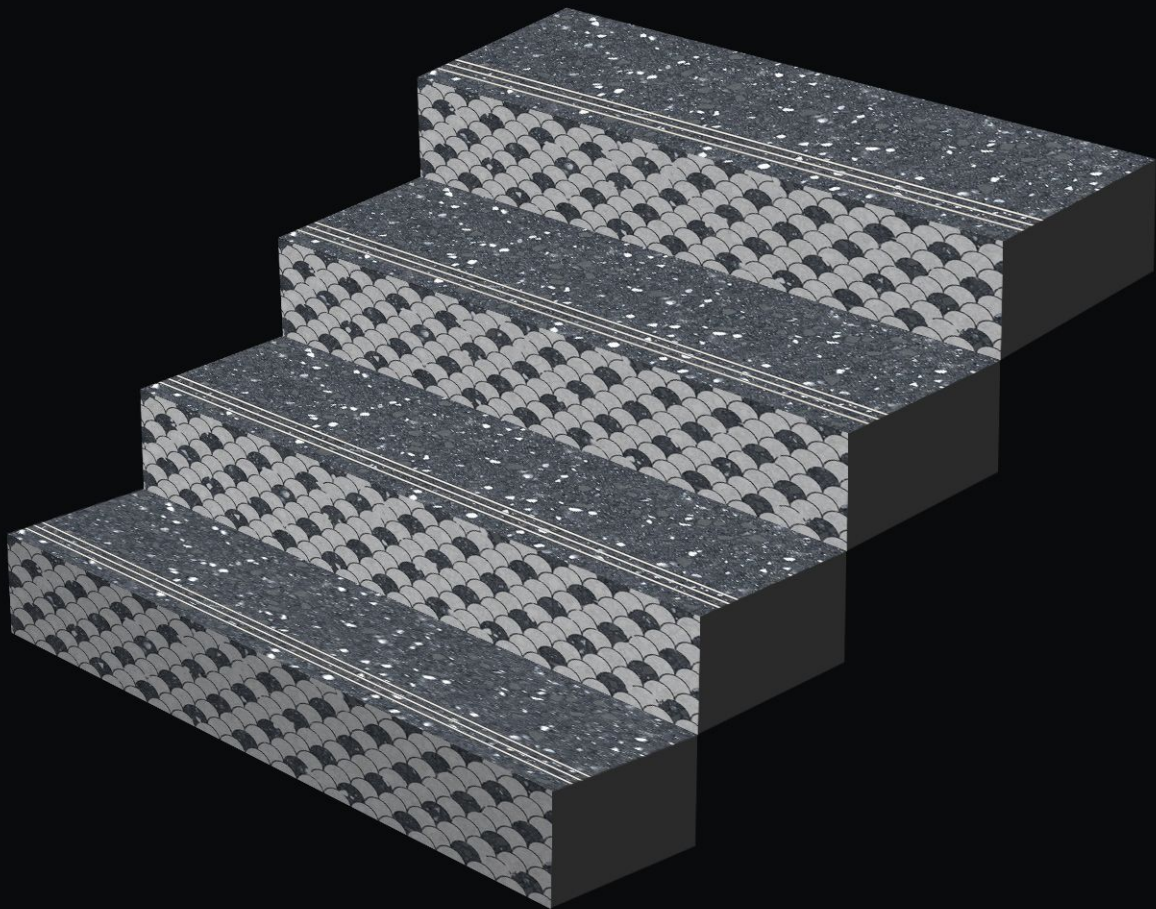
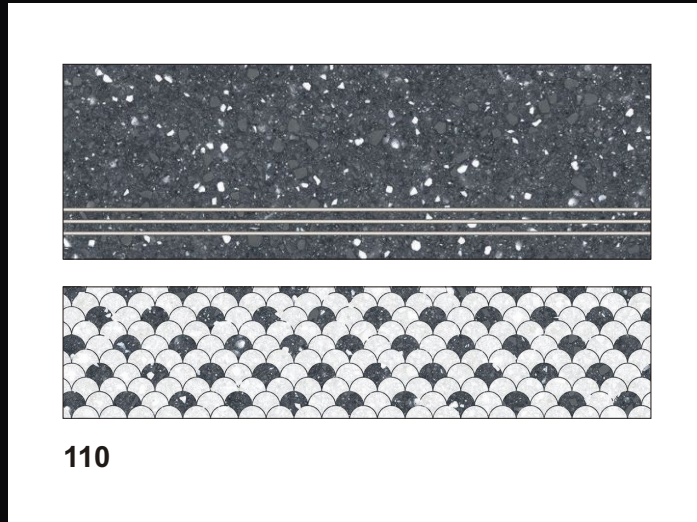


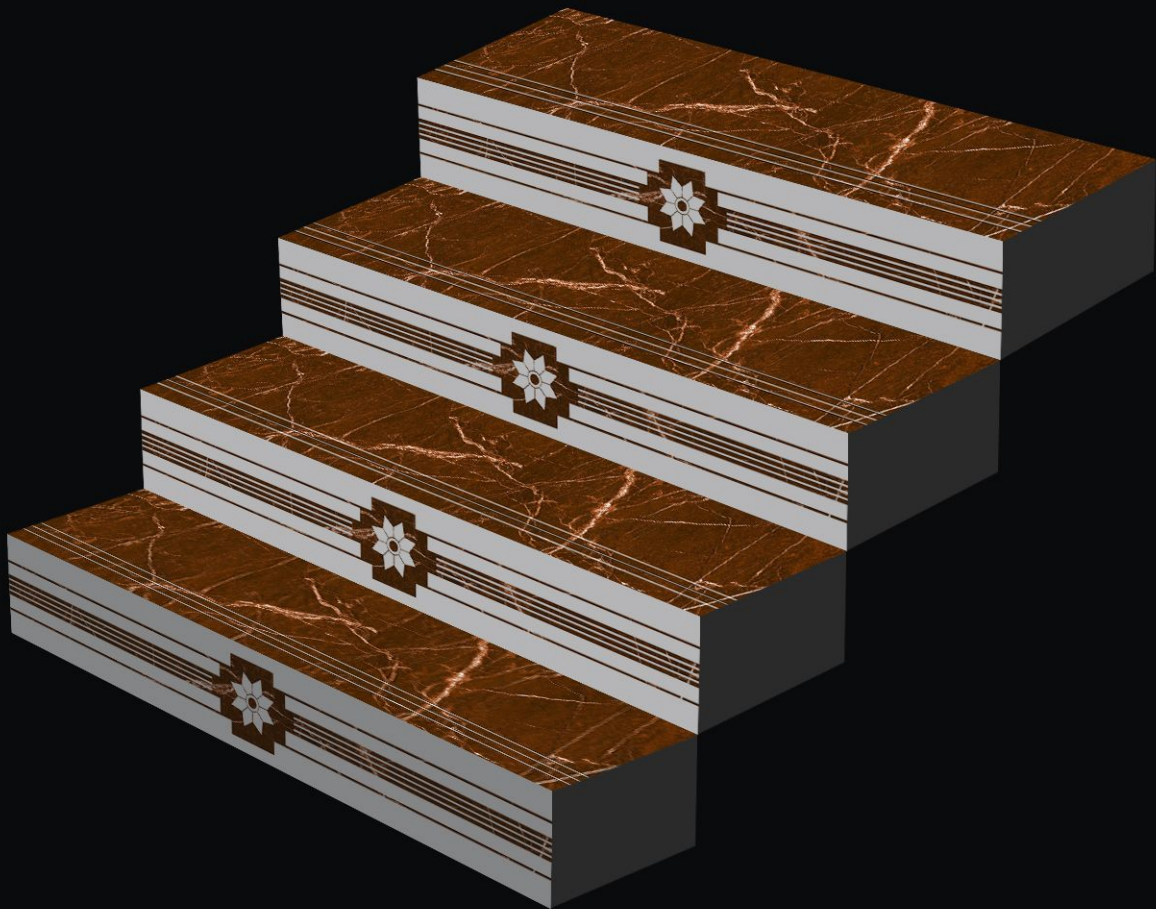
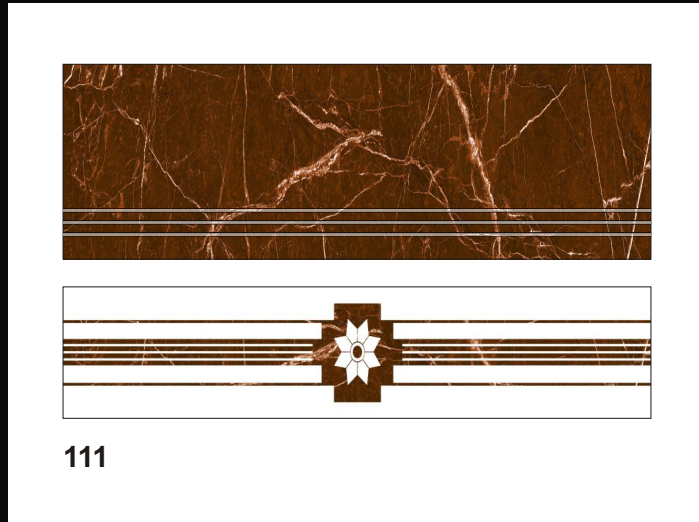


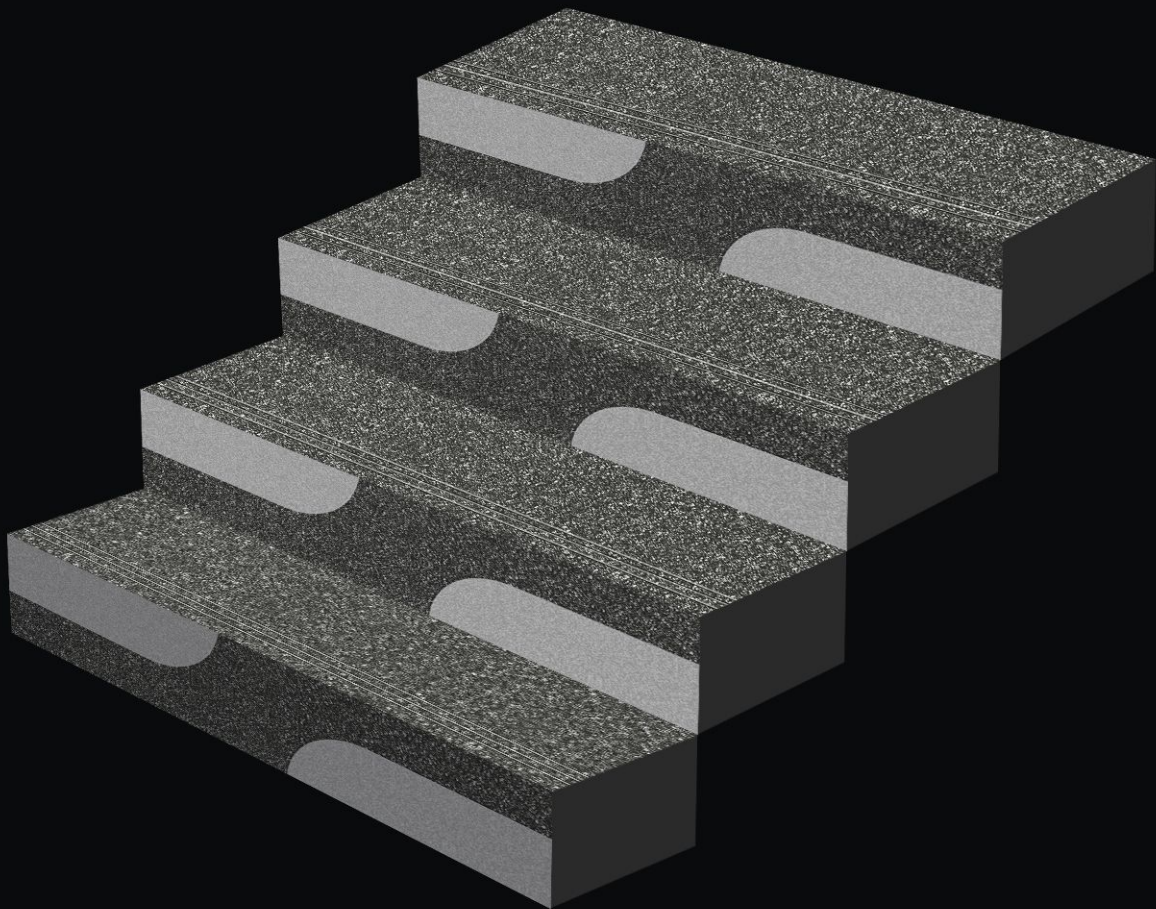
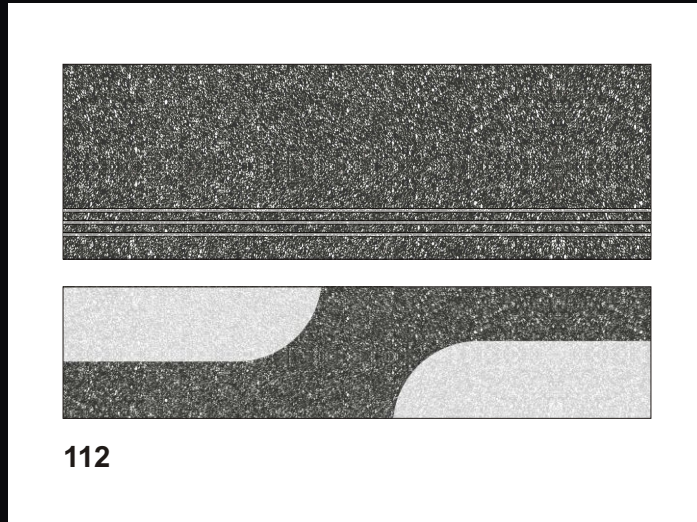


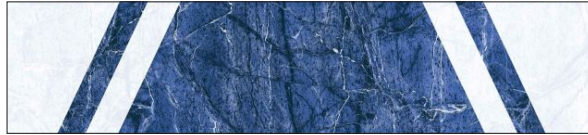
109



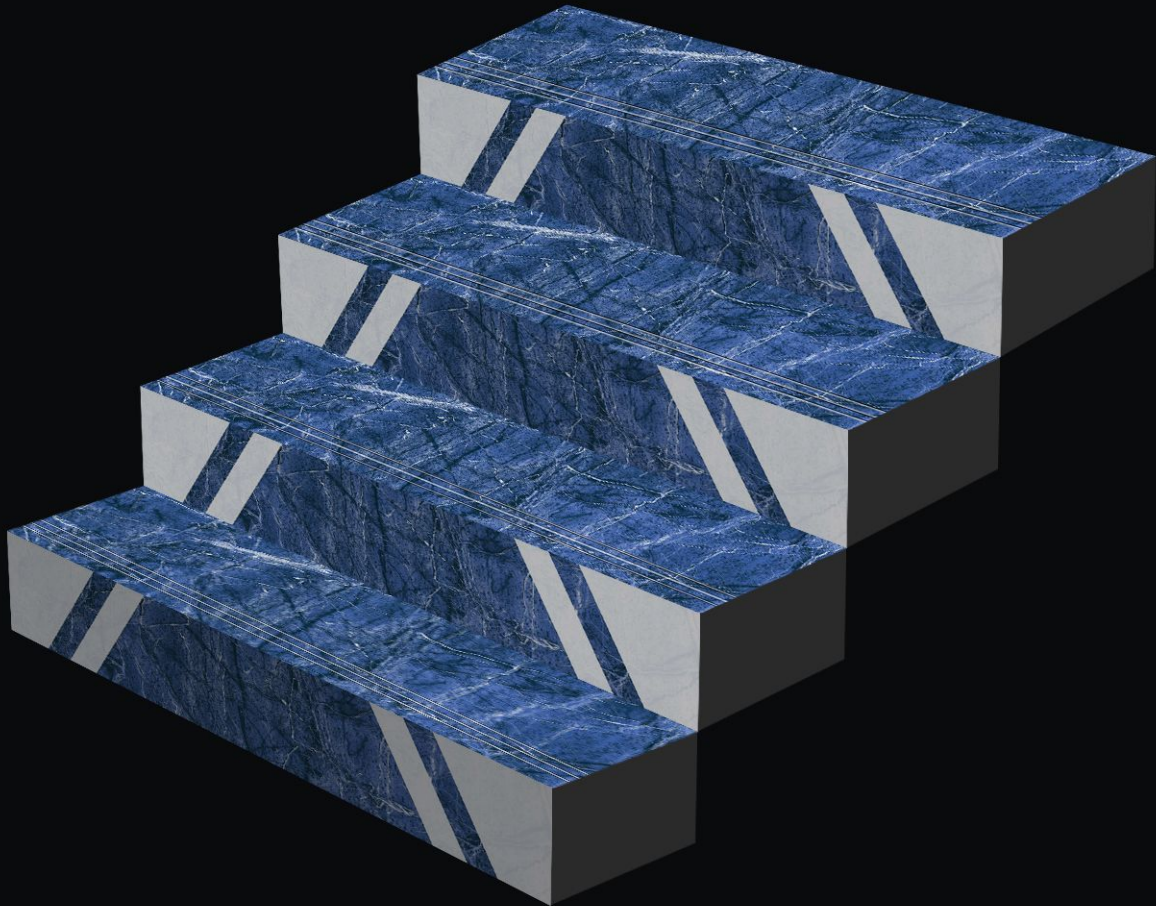








113



STEP TILE



INTERIOR USE



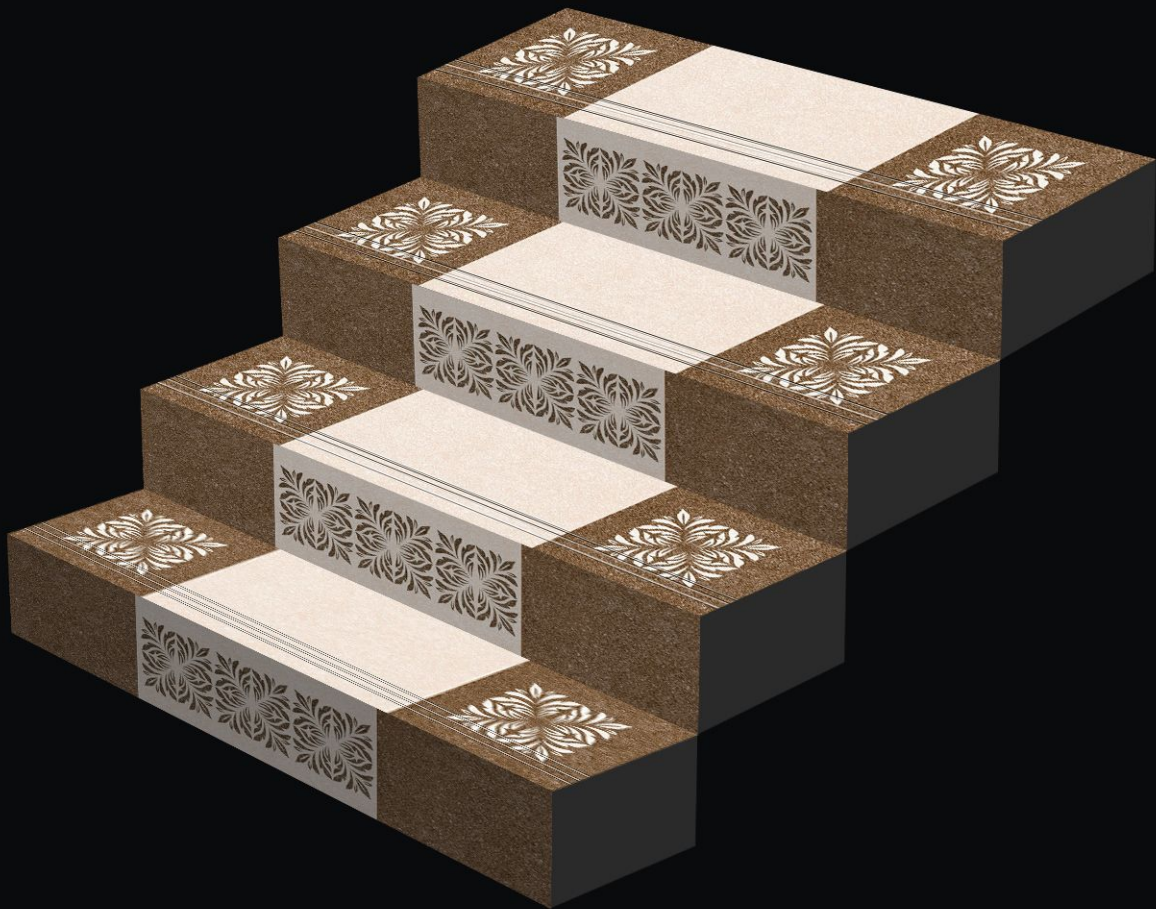
WATER RESISTANT

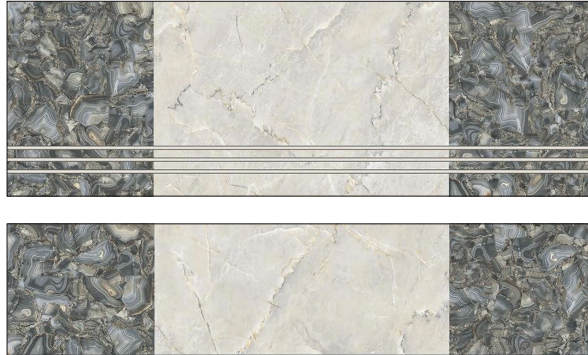


SATIN RESISTANT

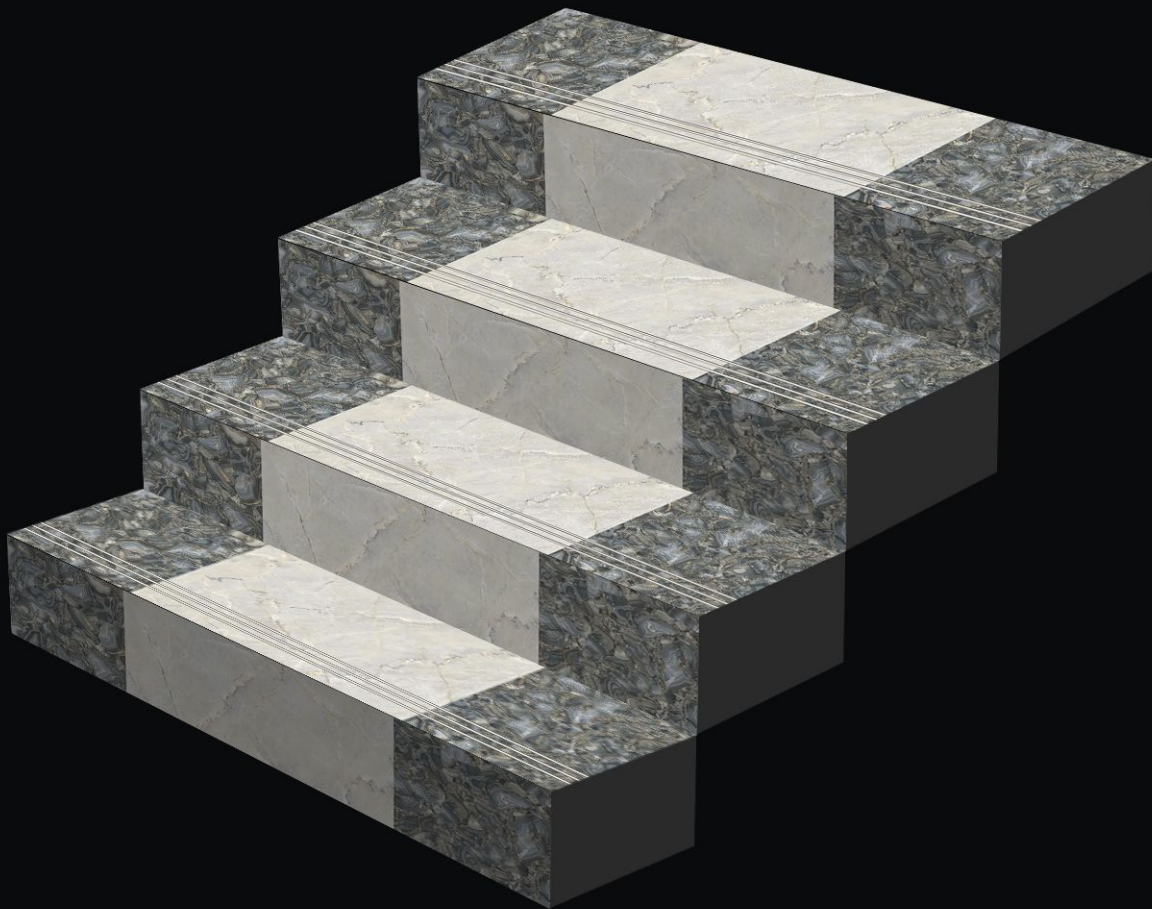


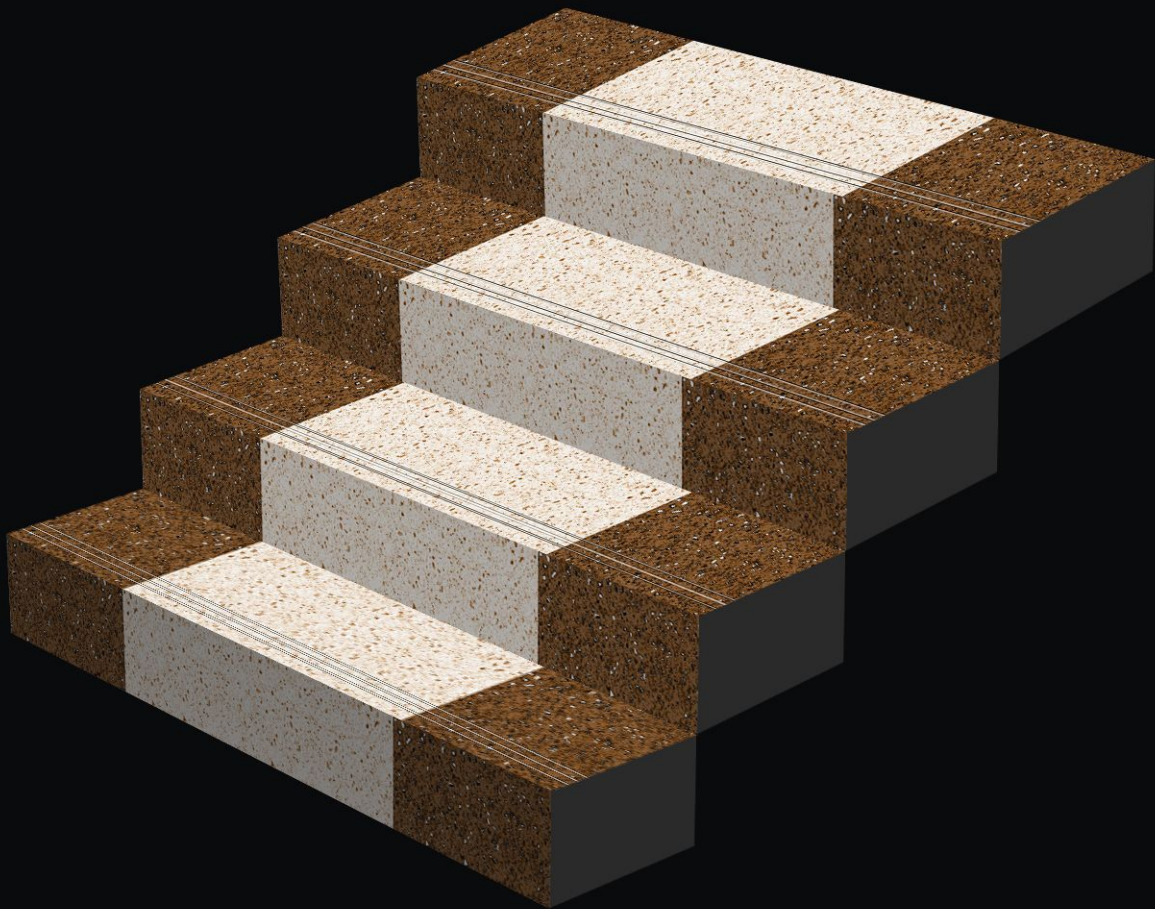
RANDOM

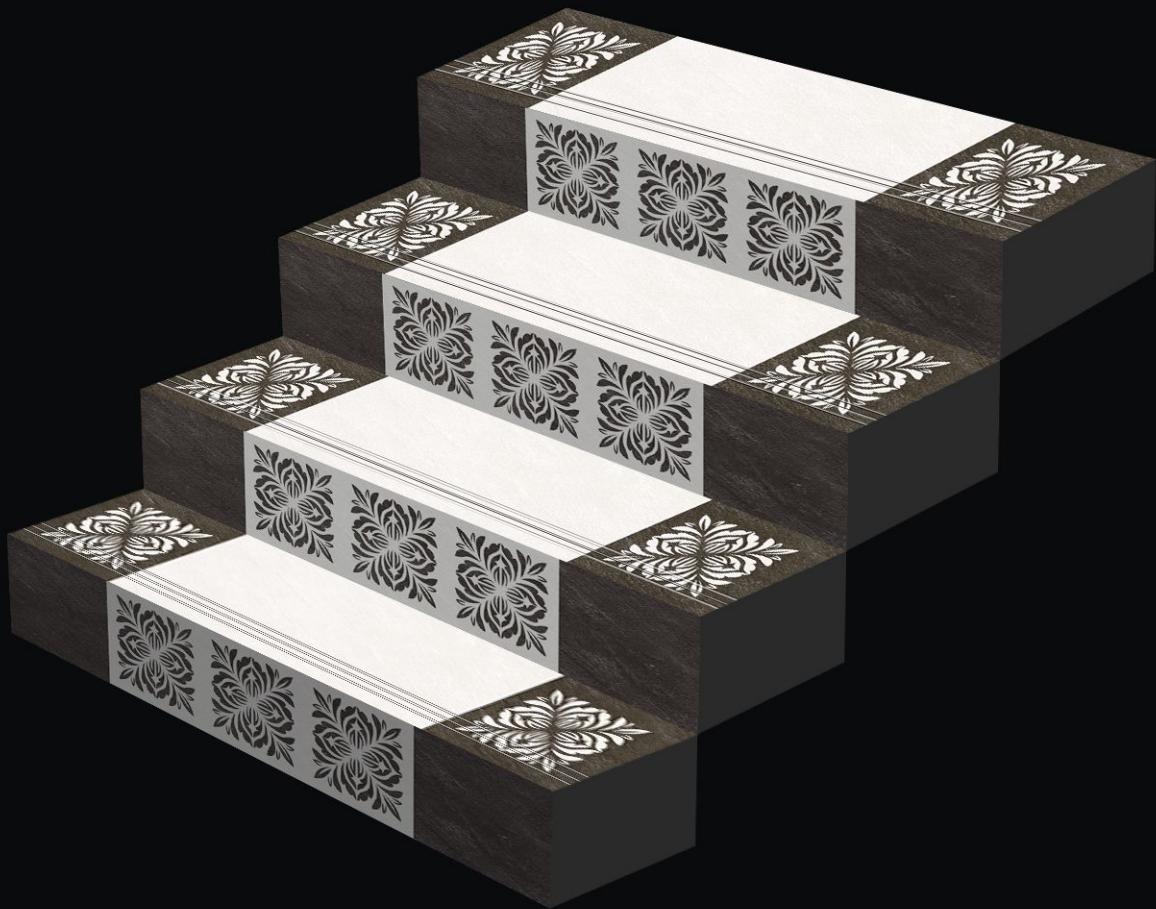


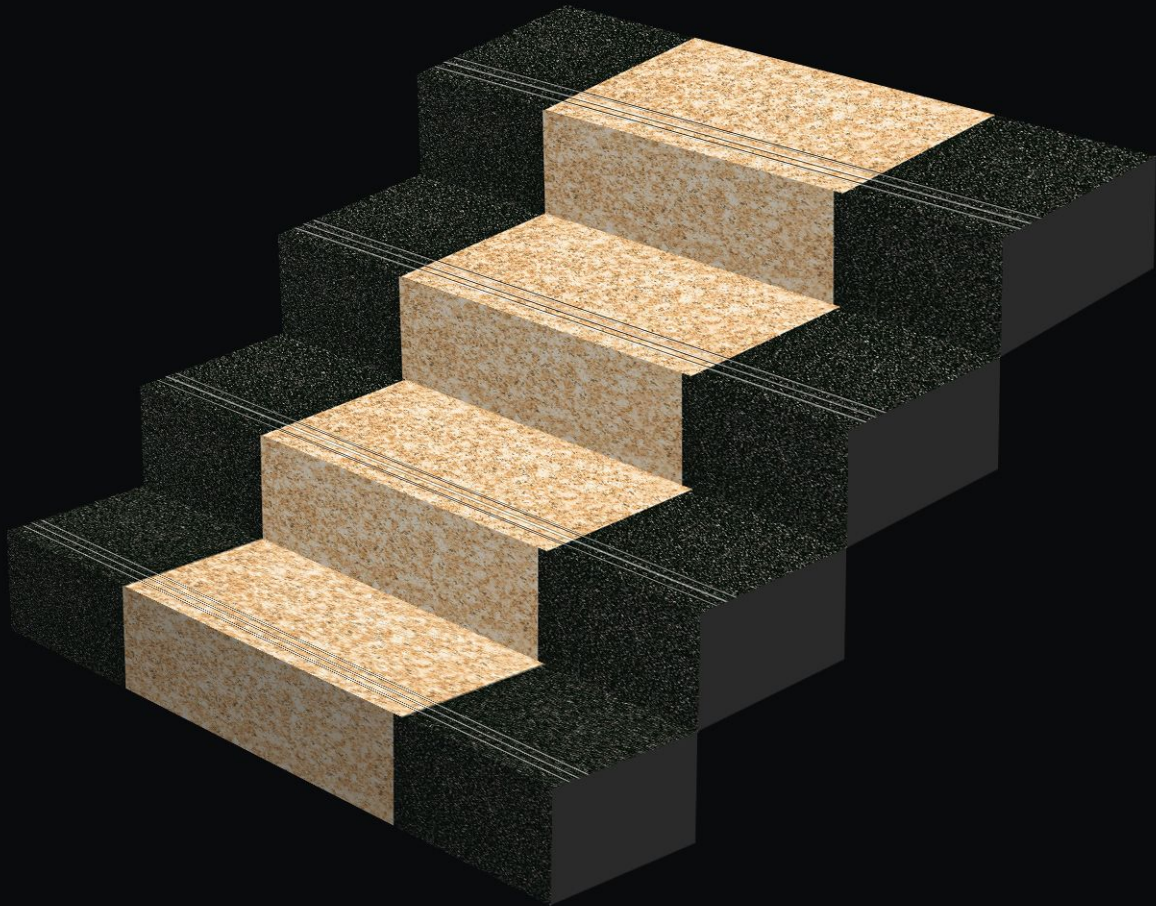
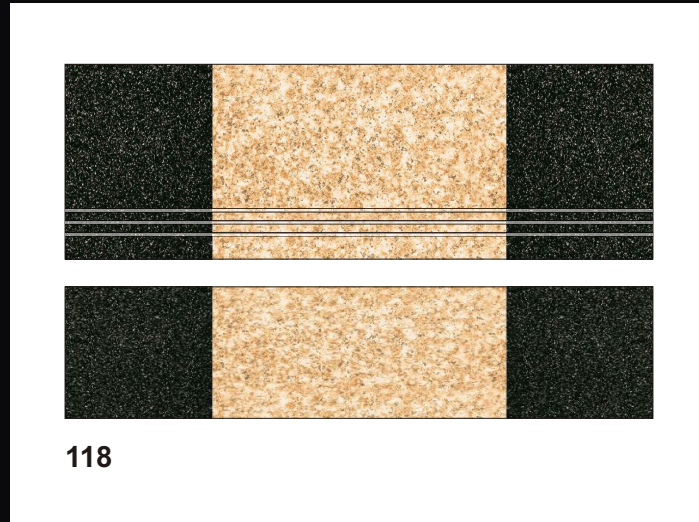


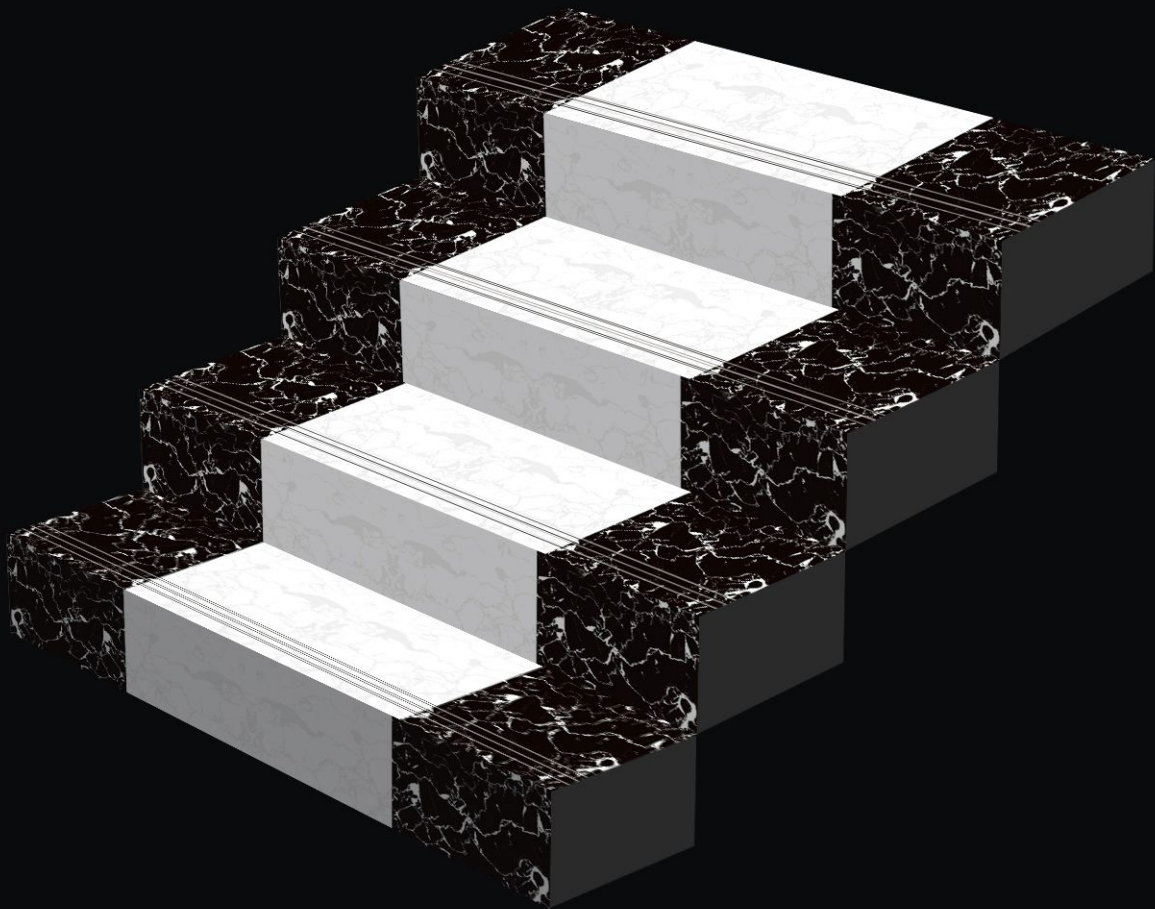
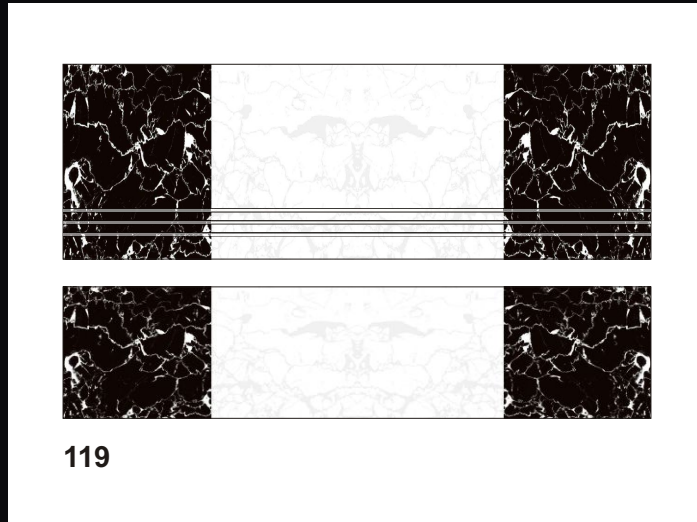
115

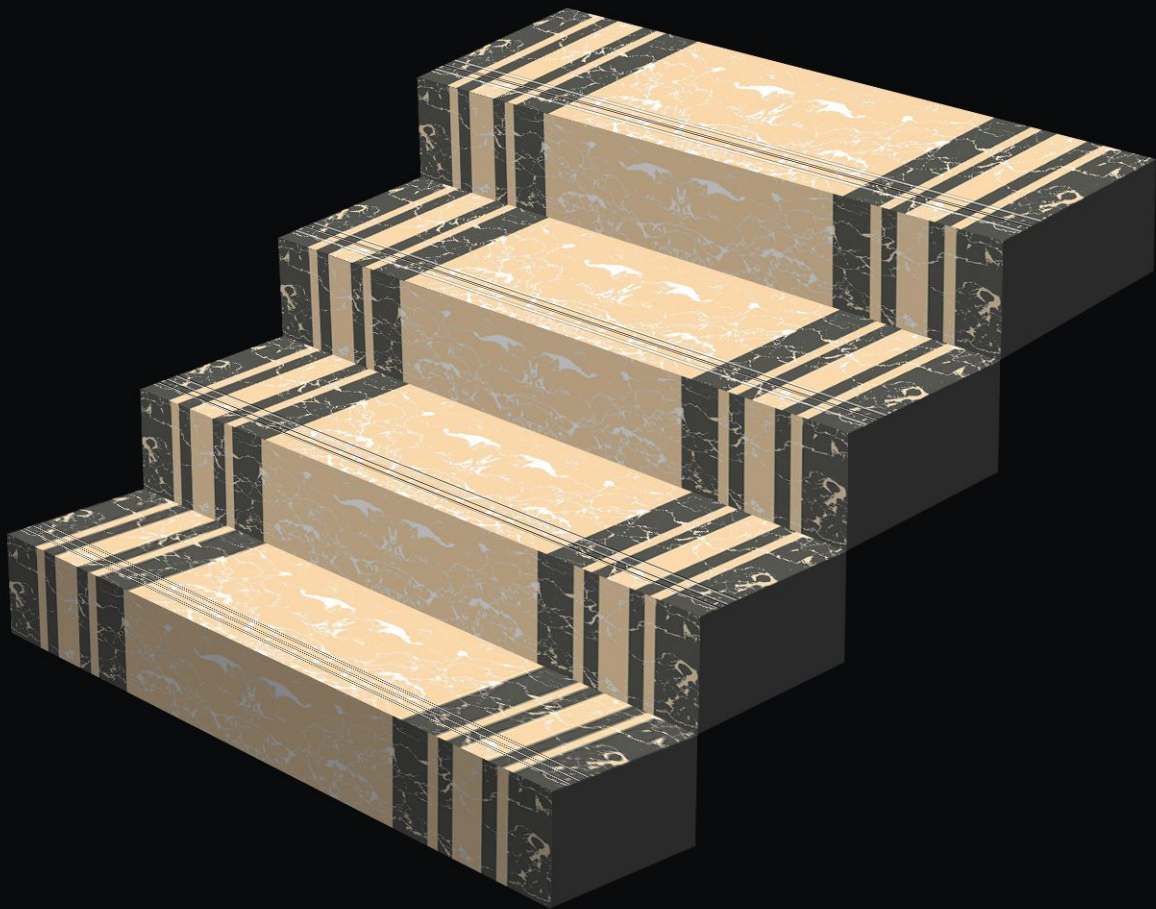












PACKING DETAILS

| PRODUCT | SIZE | PISCES (Per Box) | THICKNESS (Approx) | WEIGHT (Per Box Approx) |
|---------|------------------------|---------------------|-----------------------|----------------------------|
| Step | 1200X300mm (4-Feet) | 3.Pic. | 11mm | 24.5 kg. |
| Riser | 1200X200mm (4-Feet) | 3.Pic. | 11mm | 16.0 Kg. |
| Step | 1000X300mm (3.25-Feet) | 4.Pic. | 11mm | 28.0 Kg. |
| Riser | 1000X200mm (3.25-Feet) | 4.Pic. | 11mm | 18.8 Kg. |
| Step | 900X300mm (3-Feet) | 4.Pic. | 11mm | 24.4 Kg. |
| Riser | 900X200mm (3-Feet) | 4.Pic. | 11mm | 16.0 Kg. |